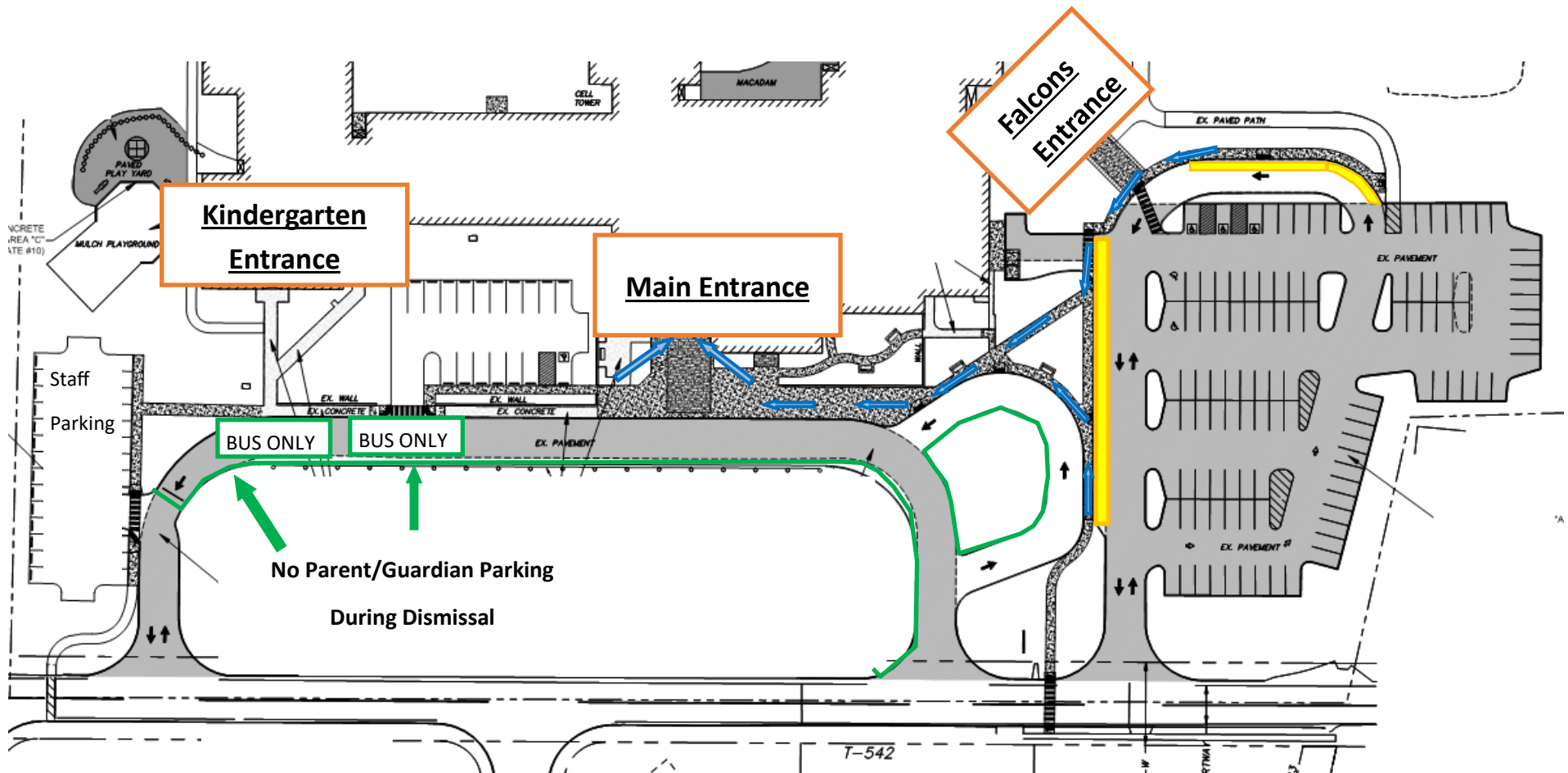


## Transportation Notice: Union Canal Elementary School, PM KINDERGARTEN August 2022

Please note the below student transportation map of Union Canal Elementary, **AS OF AUGUST 29, 2022**

- **District Transportation Arrival:** (Bus & Vans) will enter the front of the school in the Green Area designated below. Students will enter at the Kindergarten Entrance.
- **Parent/Guardian Transportation:** 12:55 Arrival—Parents can park in the middle parking lot and walk students to the Kindergarten entrance.
  - Parents should arrive **No Later Than 12:50pm**
  - Students will enter with Bus students at the Kindergarten Entrance

See Reverse Side For Dismissal



## Transportation Notice: Union Canal Elementary School, END-OF-SCHOOL-DAY DISMISSAL, 2022-23

Please note the below student dismissal transportation map of Union Canal Elementary, **EFFECTIVE Start of the 2022-23 school year**

- **District Transportation** (Bus & Vans) will enter the front of the school in the Green Area designated below.
- **Parent/Guardian Transportation** will enter the school at the main parking lot and follow the Red Arrows for traffic flow. All parent/guardian transportation may park along the loop curb or park in the parking lot.
  - **PM Dismissal:** 3:25-3:40 PM. Doors will open for the parent pick-up process will begin at 3:15 PM, Students will not be dismissed until 3:25 PM
  - Please Drive to the **FALCONS ENTRANCE**; Park your vehicle along the curb or in a parking space; **Walk-Up and ENTER the Falcons Entrance.** Please present your photo I.D. to sign out your student. *Must Enter Falcons Entrance and Show I.D.*
  - Students will be dismissed at 3:25 PM at the Falcons Entrance and instructed to walk outside and meet you.

